






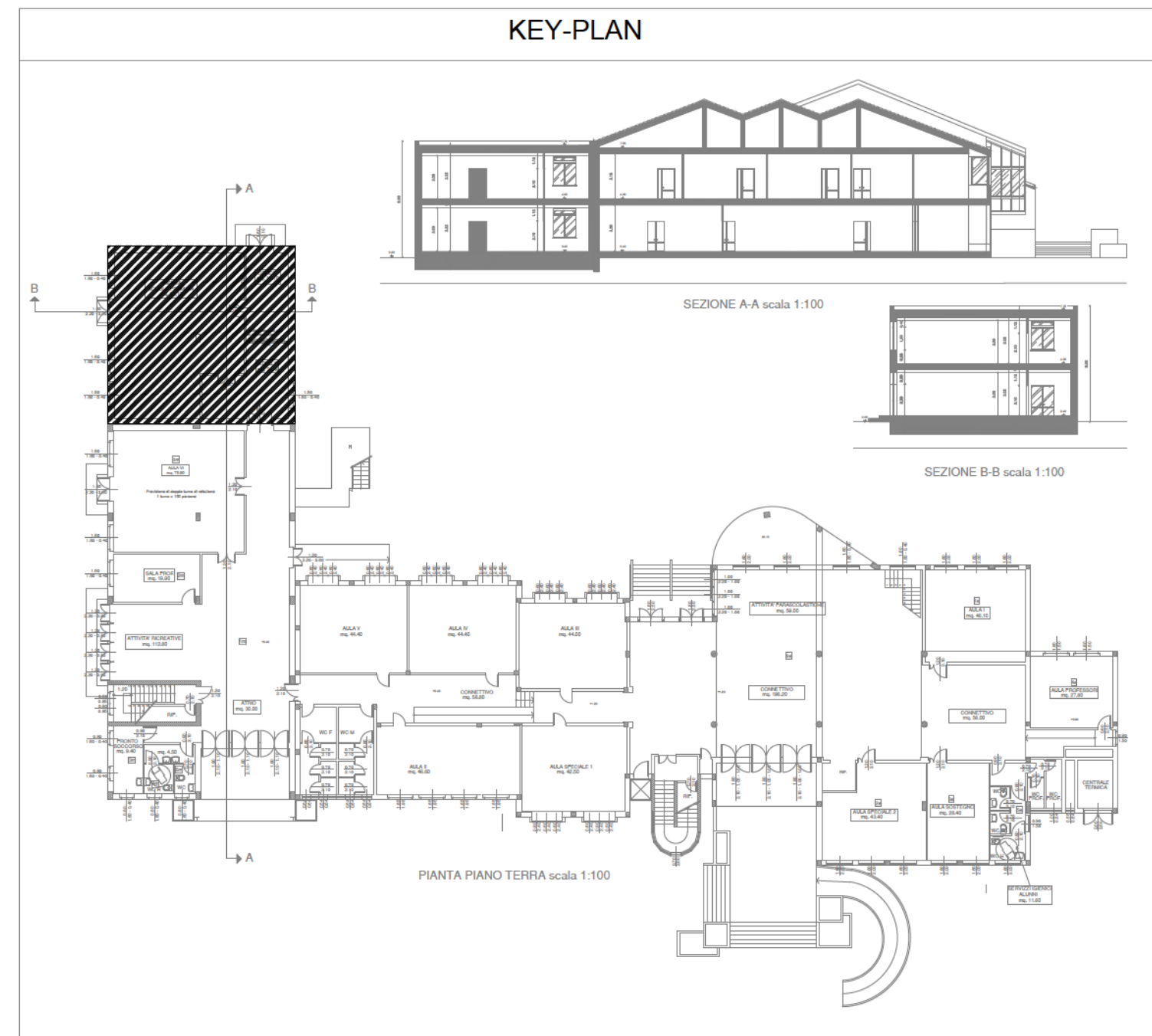
[illegible]

LEGENDA SIMBOLI DISTRIBUZIONE	
	QUORDO ELETTRICO DI ZONA GENERALE/CAMERA
	CANALE PROTAGAM SERVIZIO ENERGIA COMPLETO DI SEP.
	TUBAZIONE INCASSATA A PAVIMENTO
	TUBAZIONE INCASSATA / A VISTA
	MONTANTE IMPIANTI ELETTRICI
	POPZETTO IN C.S. 50x50x5cm
	PULSANTE DI SGANCIO



LIVING s.r.l.

SEDE LEGALE:

Via Guido D'Arezzo, 4 - 20145 Milano (MI) - Italia

SEDE OPERATIVA:

Via Giotto, 7 - 20032 Cormano (MI) - Italia

Tel. +39 02 36631491 - Fax +39 02 36631491

P.Iva e C.F.: 09390360965

Email: [info@living-ing.com](mailto:info@living-ing.com)

Web: [www.living-ing.com](http://www.living-ing.com)



**LIVING**  
INGEGNERIA

COMMITTENTE

COMUNE DI LUNGAVILLA  
27053 (PV)

Firma: \_\_\_\_\_

INTERVENTO

OPERE DI AMPLIAMENTO LLA SCUOLA PRIMARIA E SECONDARIA DI PRIMO GRADO  
PER LA REALIZZAZIONE DELLE MENSE SCOLASTICHE DI CUI AL PNRR  
VIA DOINIGI MASSAZZA, 57/A - 27053 LUNGAVILLA (PV)

OGGETTO

PROGETTO DEFINITIVO/ESECUTIVO  
IMPIANTO ELETTRICI E SPECIALI  
PIANO TERRA PRIMO DISTRIBUZIONE PRINCIPALE

RESPONSABILE PROGETTO

Per. Ind. Fabio Pignattelli

0123-3695

IS

03

3

COMMESS

0123-3695

SCALA



IMPRESA

PROGETTISTA

DATA

01 Marzo 2023

#### FORMATO

A1

REVISIONE

Rev.A :	-	Descr.A :	-	Revision_A :	-
Rev.B :	-	Descr.B :	-	Revision_B :	-
Rev.C :	-	Descr.C :	-	Revision_C :	-
Rev.D :	-	Descr.D :	-	Revision_D :	-
Rev.E :	-	Descr.E :	-	Revision_E :	-
Rev.F :	-	Descr.F :	-	Revision_F :	-
Rev.G :	-	Descr.G :	-	Revision_G :	-